

I want to visit the Children's Gallery...

### When can I visit?

- \* Everyday 8:30 ~ 18:30, hours extended until 20:30 on Saturdays.
- \* Closed every Wednesday afternoon.

### Do I need to purchase a ticket?

- \* No. The Children's Gallery is FREE.

### Do I fit the age limit?

- \* Children ages 7-12 are welcome to visit with their family.
- \* Children must enter with their parents or teachers.

### Do I need to make a reservation?

- \* Groups with less than 10 people are welcome to visit within the gallery hours.
- \* Groups with more than 10 people must make a reservation with the gallery 7 days prior to visiting. For reservation, please log on to the NPM website at <http://www.npm.gov.tw>
- \* In order to provide the most comfortable learning environment, we have limited the number of visitors to 60 during each scheduled time of entry.

### What can I do in the Children's Gallery?

- \* Think, observe, work, share, and learn!



國立故宮博物院  
NATIONAL PALACE MUSEUM

221 Zhishan Rd., Sec. 2, Taipei 11143, Taiwan, R.O.C.  
Tel: 886-2-2881-2021 ext.2851 Fax: 886-2-2881-4138

<http://www.npm.gov.tw/children/zh-tw>

Remember to get a stamp at the information desk as a souvenir!



I have something to say...



Write down what you would like to share with everyone!



兒童學藝中心  
CHILDREN'S GALLERY

Map

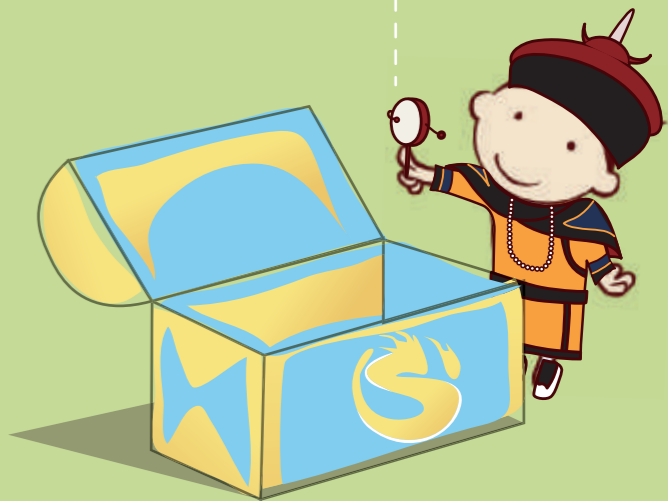
English



國立故宮博物院  
NATIONAL PALACE MUSEUM

# Let's Open Emperor Qianlong's Treasure Box!

Hi! Welcome to the National Palace Museum's Children's Gallery! Here, we have exciting displays, interesting films, and many interactive games to help you learn about Emperor Qianlong's and his family's treasures! Let's go and have fun!





**Look!**  
Where are the  
**treasures?**



**3 Artifacts Exploration Area**

Try it! What would it feel like to play a curio box or restore a ceramic?

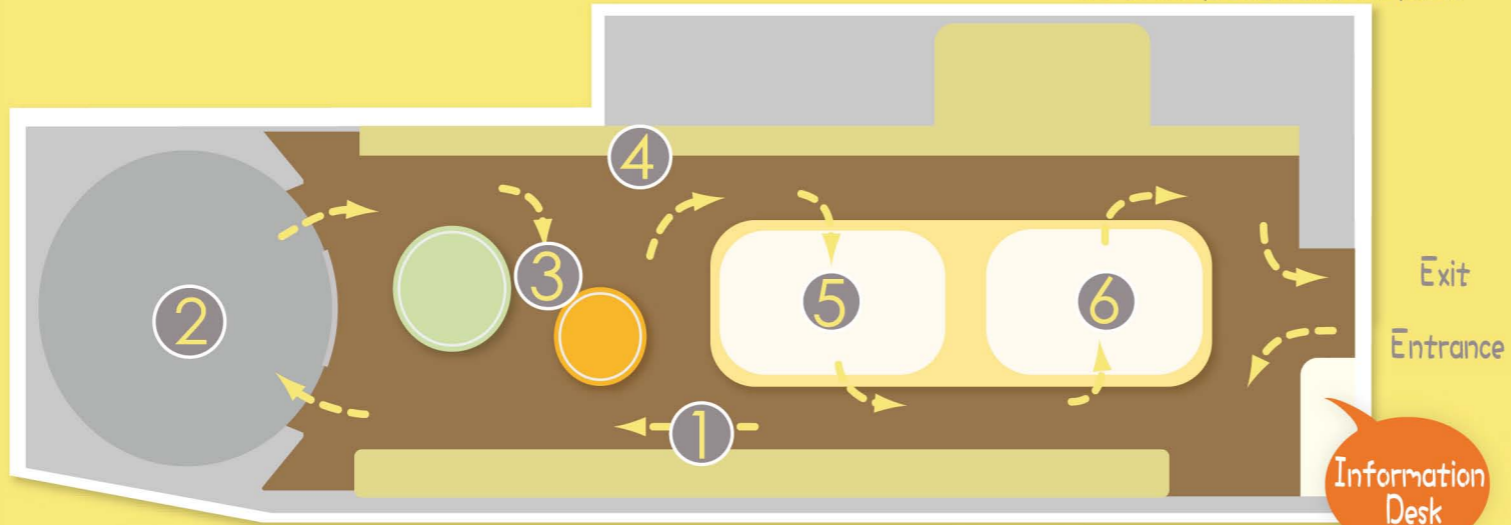
**4 The Special Exhibition Area**

Let's see how each of these treasures is different!  
Can you guess what they were used for?

**5 Entering the Painting "Along the River During the Qingming Festival"**

Think about it! In the painting "Along the River During the Qingming Festival", do you notice any similarities between life of the present and the past?

**Create my own spinning bottle!**



**2 Orientation Theater**

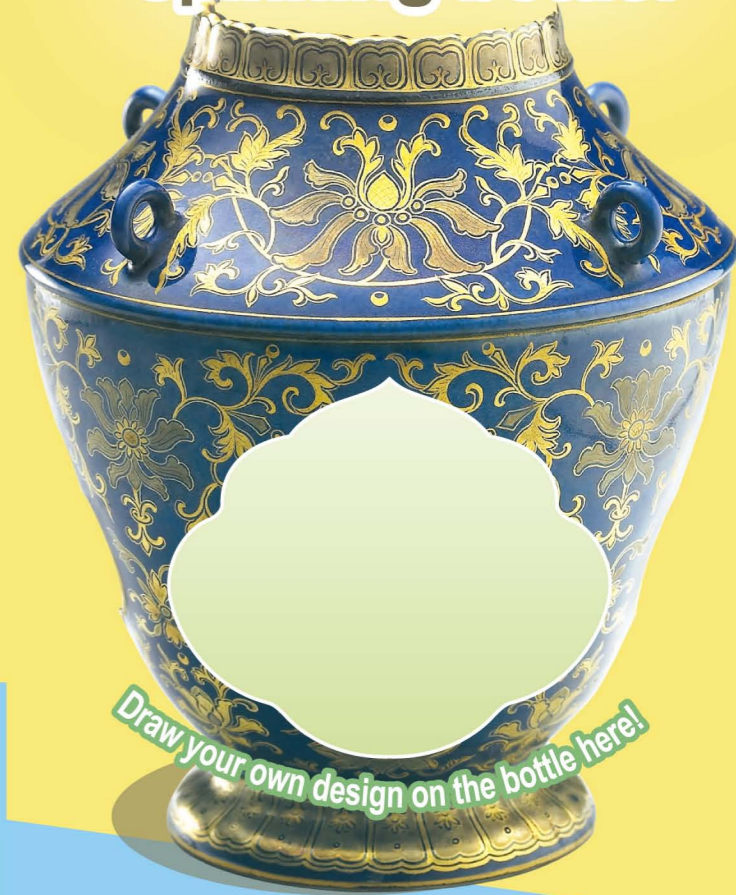
What kind of exciting adventures would Emperor Qianlong and the kid go on after they meet in the "National Treasure Maze"??

**1 Grand Animal Garden**

Think about it! Without a camera, how did ancient people record animals?

**6 Fun Chinese Characters**

From primitive shapes to artful lines, how have the Chinese character evolved? Let's take a look!



*Draw your own design on the bottle here!*